



MOST BEAUTIFUL FLY FISHING WATERS OF SLOVENIA

Fisheries Research Institute of Slovenia

Dear Fly Fishermen,

Free time is becoming increasingly important in our busy lives. We all wish to spend that time wisely and to get the most out of our leisure experiences. Fly Fishing is fast becoming one of the top outdoor pursuits and more and more busy people are turning to the gentle art as a therapeutic means of relaxation.

Compressed into a surprisingly small area you will find in Slovenia a unique diversity of landscapes and an unsurpassed range of sport fishing rivers and streams.

The aim of this short brochure is to introduce you to the most beautiful fly fishing waters of Slovenia. In western Slovenia, next to the border with Italy, surrounded with snow-covered mountain tops, the emerald green, crystal clear river Soča will charm you with its breath-taking natural surroundings. Not far away, in neighbouring Alpine valleys, flow the Sava Bohinjka and Radovna Rivers. Only a few dozen kilometres towards the Central Slovenian region is one of the most elegant and handsome grayling waters in Europe, a true karstic beauty – the Unica; just a stone's throw away lies the unique Obrh stream. It is important not to overlook the Krka – a fascinating karstic river, which is at its most beautiful in late spring and early summer.

We Slovenians take great pride in the fact that these waters are managed in a professional and conservation minded way by the Fisheries Research Institute of Slovenia (<http://www.zzrs.si/en/>). The high level of preservation afforded to these waters, which enhances the natural environment and protects aquatic biodiversity, offers the angler not only top class fly fishing but also access to the aesthetic pleasures of nature

in its purest form. Below we have listed all of the major fly fishing waters, complete with descriptions of each river district, a listing of key fish species of interest to the fly angler, fishing seasons and permitted angling methods. We hope that you find the information both enjoyable and useful and that as a result you will visit us shortly to enjoy, at first hand, the stunning beauty of Slovenia!

A very warm welcome and tight lines,
With kind regards,



Dejan Pehar,
*Director of the Fisheries
Research Institute of
Slovenia*





Zavod za ribištvo Slovenije

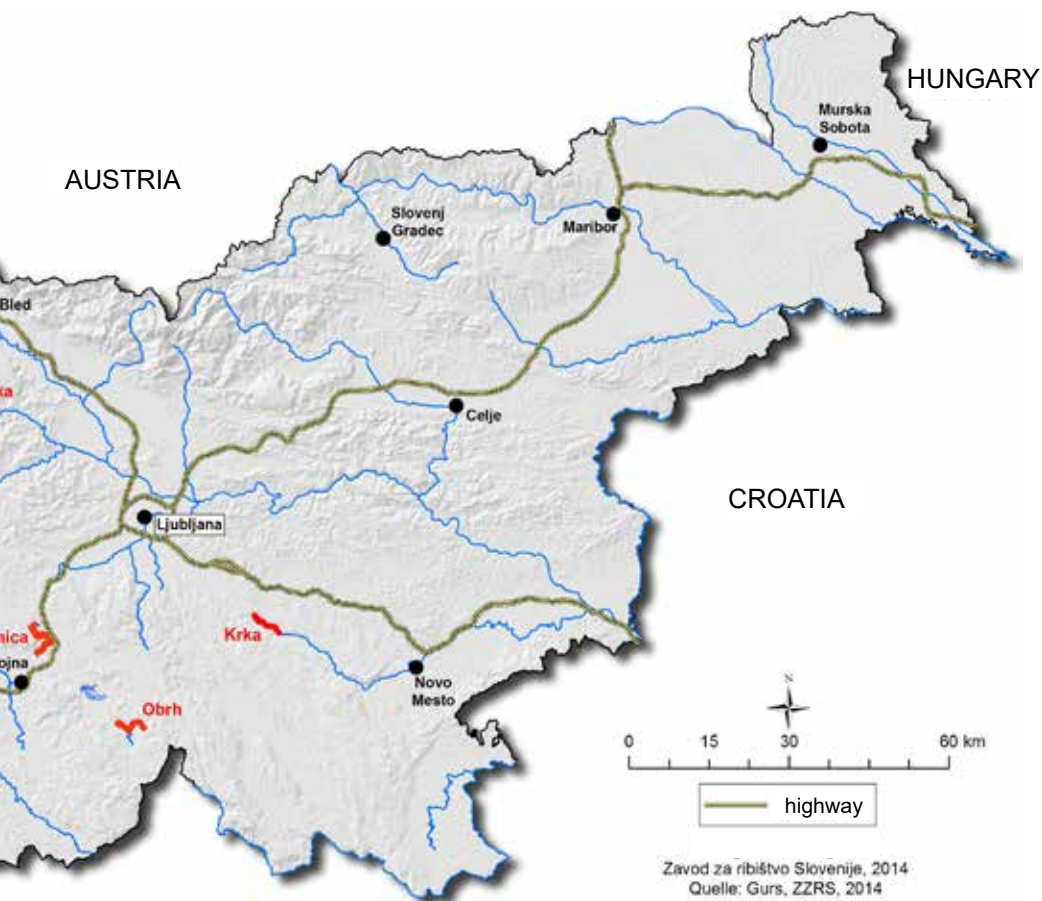
Fisheries Research Institute of
Slovenia

Spodnje Gameljne 61a
1211 Ljubljana, Slovenia

T: +386 1 24 43 400

info@zzrs.si

www.zzrs.si



Zavod za ribištvo Slovenije, 2014
Quelle: Gurs, ZZRS, 2014

1.

UPPER SOČA, LEPENA AND KORITNICA



Soča River - one of Slovenia's finest national treasures. It is rightly considered a very special jewel amongst the rivers of Europe. Its emerald green coloured waters and white, gravel laden banks, which lie between towering snow-covered mountain tops, offers the fisherman a truly unique experience.

The River Soča is particularly famous for the marble trout (*Salmo marmoratus*), which is named after the river itself (Soča trout). The marble trout

is a member of the largest salmonid family of fishes. It is a very special native fish and as a pre-glacial endemic species it falls under a special conservation and protection regime. The Soča grayling is also unique and with its distinctive pale flanks and golden belly. The fish is quite distinct from the darker, Sava grayling, which inhabits the other waters of Slovenia. The river is easily accessible for the visiting angler, since the road from the Bovec to Nova Gorica, follows close by the river's sinuous course.





Fish species:

Marble trout, Marble trout / brown trout hybrids,
Grayling, Rainbow trout



Lepena 1, 5232 Soča
+386 5 388 95 13
kampklin@siol.net
www.kamp-klin.sloveniaholidays.com

INFORMATION

Fishing is permitted in the following

areas: Soča River (14 km) from the bridge on the road headed for the village Vas na Skali to the bridge in the village Čezsoča, including its tributaries, the Lepena (the entire 6 km length of the stream) and the Koritnica (2 km district - from the bridge on the road Bovec – Trenta downstream to the outfall in Soča).

Catch and release area: Soča River from the bridge on the road headed for the village Vas na Skali to the confluence with the Lepena River and from the bridge in Kršovec to the bridge in Čezsoča. The entire Lepena River and Koritnica River from the bridge on the road Bovec - Trenta to the confluence with the Soča River.

Normal fishing area: Soča River from the confluence with Lepena River to the bridge in Kršovec.

Fishing regulations: The use of one fly fishing rod and one artificial fly only is permitted. Use of barbless hooks is mandatory. Spinning as well as fishing from the bridges is not permitted.

Daily bag limit: 3 salmonids, of which only 1 may be a marble trout or a grayling and only one salmonid above 50 cm in overall length (measured from the tip of the nose to the tip of the tail fin) may be retained.

Fishing season:

From 1st April to 31st October

Minimum length limit and fishing season:

Marble trout, 40 cm. From 1.4. to 30.9.

Grayling 40 cm. From 1. 6. to 31.10.

Rainbow trout, no length limit. From 1. 4. to 1. 10.

Marble / brown trout hybrids, no length limit.

From 1. 4. to 31. 10.

2.

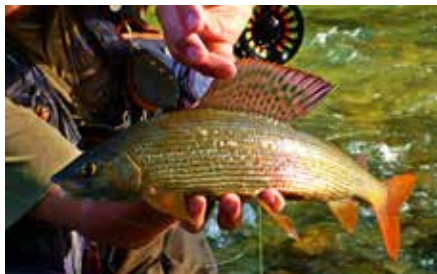
SAVA BOHINJKA



The Sava Bohinjka is a very beautiful, Alpine river, holding an abundance of fish. It emerges from Lake Bohinj and is exceptionally rich in nutrients, particularly in the long grayling areas. In contrast to other Alpine rivers, the valley of the Sava Bohinjka catches the sun and is covered in thick, bankside vegetation. It is renowned for the abundance of its fire flies which seem, at times, to illuminate the valley on warm, summer evenings. The river is accessible almost in its entirety, from one or the other of the river banks. All of the Sava

Bohinjka's fishing areas are under the management of the Fisheries Research Institute of Slovenia. The river holds strong, hard fighting brown trout, rainbow trout and abundant native grayling populations. The mysterious Danube salmon or huchen is also present. Although not often targeted by visiting anglers, this non-migratory, predatory salmon, grows to 10kg or more, on a rich diet of the resident fish species. Provided water levels are not too high the fishing on the Sava Bohinjka is very consistent throughout the season, from spring to late autumn.





Fish species:

Grayling, Brown Trout, Huchen, Rainbow Trout




 1986
HOTEL
TRIPİČ
 RESTAVRACIJA



Triglavska cesta 13,
 4264 Bohinjska Bistrica
 +386 4 828 0 120, info@hotel-tripic.si,
www.hotel-bohinj.si

INFORMATION

Fishing is permitted in the following areas: River Sava Bohinjka from the road bridge below Bohinjska Bistrica to the dam in Soteska.

Catch and release area: from the railway bridge in Bitnje to the first road bridge above Soteska.

Normal area: from the road bridge just before Bohinjska Bistrica to the railway bridge in Bitnje and from the first road bridge above Soteska to the dam in Soteska.

Fishing regulations: The use of one fly fishing rod and one artificial fly only is permitted. Use of barbless hooks is mandatory. Spinning as well as fishing from the bridges is not permitted.

Huchen fishing is allowed only using artificial flies or by spinning, using artificial lures. The minimum bait size is 10 cm. The use of single hook is mandatory. Details of each huchen caught must be reported to the local Fishery Officer.

Daily bag limit: 3 salmonids, of which only 1 may be a brown trout or a grayling. Only one salmonid above 50 cm in overall length may be retained and only 1 huchen – which requires a special fishing permit.

Fishing season:

From 1st April to 30th November

Minimum length limit and fishing season:

Grayling 40 cm. From 1.6. to 30. 11.

Brown trout 40cm. From 1. 4. to 30. 9.

Rainbow trout, no length limit. From 1. 4. to 30. 11.

Huchen 80 cm. From 1. 12. to 14. 2. (special fishing permit required).

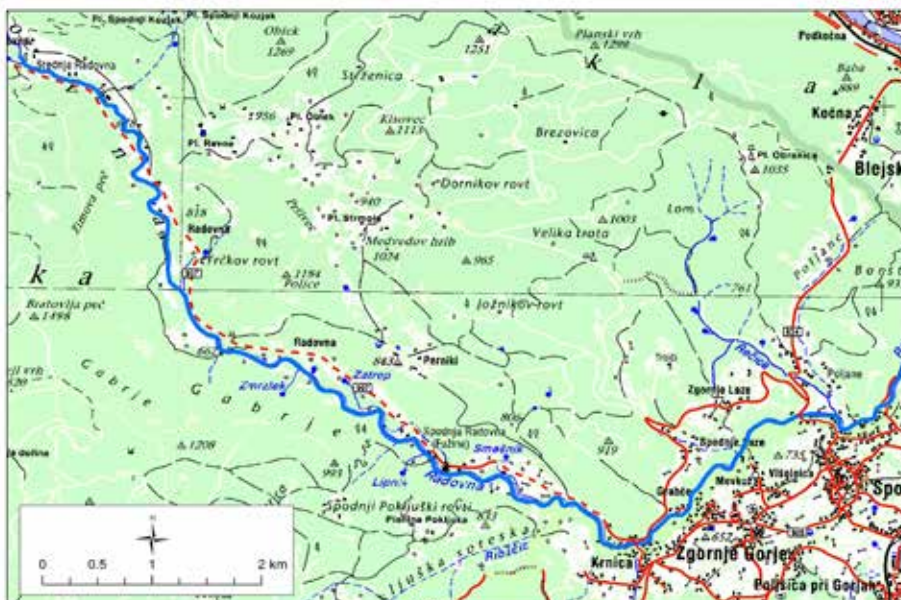
3.

RADOVNA



The Radovna River follows a narrow, steep gradient, through a picturesque Alpine valley, in the Triglav National Park. A true fly fishing paradise, where, thanks to the abundant stocks of resident trout, you can enjoy the stunningly beautiful natural scenery of the Alps and lively fishing. Only brown trout inhabit the upper river and due to the very cold water the fish grow slowly, despite the abundance of insect life in the river.

The average size of fish here is small, but these handsome and very hard fighting trout can provide great sport on a small 3 or 4 weight rod. The lower part the river is warmer and characterised by many deep pools. These hold some trophy browns and rainbows, which are often most active around dusk. The Radovna provides lively and interesting fishing throughout the fishing season.





Fish species:

Brown trout, Rainbow trout



Gostilna VINTGAR



Pohorn 62, 4247 Zgornje Gorje
+386 41 829 878,
gostilna.vintgar@gmail.com,
www.vintgar-bled.si

INFORMATION

Fishing is permitted in the following areas: From the bridge at the monument in Middle Radovna (Srednja Radovna) to the Vintgar Gorge.

Catch and release fishing area: From the bridge at the monument in Middle Radovna (Srednja Radovna) downstream to the outfall at the hydroelectric power plant Radovna in Lower Radovna (Spodnja Radovna).

Normal area: From the outfall of Radovna at the hydroelectric power plant Radovna in Lower Radovna (Spodnja Radovna) to the Vintgar gorge.

Fishing regulations: The use of one fly fishing rod and one artificial fly only is permitted. Use of barbless hooks is mandatory. Spinning as well as fishing from the bridges is not permitted.

Daily bag limit: 3 salmonids, of which only 1 may be a brown trout. Only one salmonid, above 50 cm in overall length, may be retained.

Fishing season:
From 1st March to 31st October

Minimum length limit and fishing season:
Brown trout, 30 cm. From 1. 3. to 30. 9.
Rainbow trout, no length limit. From 1. 3. to 31. 10.

4.

KRKA



The Krka is one of the most beautiful Slovene rivers. It is a typical karstic river. As with most chalk streams it holds a rich abundance of cold, spring water from its very source. For the first 3 km of its course, to the village of the same name – Krka - the river flows evenly and smoothly. The river bed in this area lies on a level with the surrounding valley. Downstream of Krka the river flows towards the hills of the Dolenjska region (Lower Carniola), through a deep and narrow valley. A very special characteristic of the Krka are the sills of tuff (a type of rock made of volcanic ash ejected from a vent during a volcanic eruption), which forms a very distinctive series of pools in the river bed. The water pours from pool to pool, over these natural cascades. Here, the

resident trout may find innumerable, secret hiding places. The stable water temperature provides optimal conditions for fish and the Krka is the prime choice for local anglers in the early season. The river fishes best from mid-March until the end of June, but particularly in May and June when the river enjoys spectacular hatches of mayflies, both large and small species, sedges and stone flies. Dry fly fishing is a particularly rewarding experience on the Krka.

Fisheries Research Institute of Slovenia introduced new fishing rules on the Krka river! Only 6 fishermen will be allowed to fish in the river daily!





Fish species:

Brown trout, Rainbow trout



Sadinja vas pri Dvoru 7,
8361 Dvor
+386 41 343 000, troda@siol.net,
www.novakdoma.eu

INFORMATION

Fishing is permitted in the following areas:

River Krka from its sources to the electric power plant dam in Zagradec (Fužina) - except in the Višnjica tributary.

Fishing regulations and daily bag limit:

The use of one fly fishing rod and one artificial fly only is permitted. Use of barbless hooks is mandatory. Spinning as well as fishing from the bridges is not permitted.

Daily bag limit: 2 trout, of which 1 brown trout above 50 cm in overall length and 1 rainbow trout or 2 rainbow trout.

Fishing season:

From 1st March to 30th November

Minimum length limit and fishing season:

Brown trout 50 cm. From 1. 3. to 30. 9.

Rainbow trout, no length limit. From 1.3. to 30. 11.



The Unica River is a karstic chalk stream, flowing along the southern edge of one of the most beautiful of the Slovenian karst fields - Planinsko polje (Planinsko field). It originates from the confluence of two rivers: the river Pivka bursting into life from the underworld labyrinth of the Planina cave and the river Malenščica joining it after some 2 km. From the confluence of its major tributaries to the swallow-holes in Grčarevec, the majestic Unica winds its serpentine path back and forth across the Planinsko polje.

Conditions for fish life in the Unica are optimal, benefiting, as it does, from a nutrient rich karstic underground source. From late autumn until spring the Planinsko polje is frequently covered by flood waters for a week or more, providing the river bed and the fish themselves with an even greater abundance of nutrients and nourishment. The Unica is world famous as one of the very best grayling waters in Europe. The river offers a wide

variety of fly fishing opportunities across the full season, from the best of dry fly fishing, to delicate presentation of nymphs and bugs, right through the spectrum to excellent streamer fishing for large, trophy brown trout, when water levels are high.

In May and June - the time of the large mayfly (*Ephemera* spp.) - trophy grayling and brown trout await the skilled dry fly angler. The summer heat makes the fishing more demanding but an experienced dry fly angler can still take excellent fish, particularly around dusk and beyond. Autumn on the Unica is exceptionally beautiful. Fishing amongst the russet and yellow leaves of the valley is best during the hours around midday. Autumn is synonymous with large grayling on the Unica, especially if the season proves to be warm and sunny, with consistent surface hatches of late season midges and mayflies.

Fish species: Brown trout, Grayling





INFORMATION

Fishing is permitted in the following areas: Salmonid area: Malenšiča, Pivka from the rivers source to the confluence of the two rivers. Unica - to the bridge in Laze.

Fishing regulations: The use of one fly fishing rod and one artificial fly only is permitted. Use of barbless hooks is mandatory. Dry fly only is permitted from the bridge on the road Rakek – Planina downstream! Spinning as well as fishing from the bridges is not permitted.

Daily bag limit: 1 grayling or 1 brown trout.



“DEMŠAR”
Planina 99, 6232 Planina
+386 5 756 50 13,
beno.demsar@gmail.com



Fishing season:

From 1st May to 30th November

Minimum length limit and fishing season:

Grayling, 40 cm. From 16. 5. to 30. 11.
Brown trout, 50 cm. From 1. 5. to 30. 9.



The Obrh is a delightful, small river which flows through the Loška valley. The Obrh originates from two groups of karstic springs in the southern part of the Loško field (Loško polje). It flows past Snežnik castle and through the settlement of Kozarišče. West of the settlement Pudob, the river merges with the small brook known locally as the Veliki Obrh, and continues on downstream as the main Obrh River. The river is rich in a dense carpet of natural, stream bed and marginal flora. Fish food is abundant and the Obrh is renowned for its beautifully coloured brown trout, particularly in the upper river. If good fortune is on his side, the stealthy angler has the opportunity to take a trophy brown trout from one of the river's deeper pools. There is also an abundant stock of grayling in the Obrh, and it can produce excellent bags of a high average size to the visiting angler. Fishing on the Obrh is covered by special fishing regulations. Only 3 fishermen are allowed to fish in the river daily and only a maximum of 100 fishing permits may be issued in one fishing season.



Fish species:

Brown trout, Grayling, Rainbow trout



INFORMATION

Fishing is permitted in the following areas: The entire length of the river

Fishing regulations: The use of one fly fishing rod and one artificial fly only is permitted. Use of barbless hooks is mandatory. Spinning as well as fishing from the bridges is not permitted.

Daily bag limit: 1 grayling or 1 brown trout or 1 rainbow trout.

Fishing season:
From 1st April to 30th November

Minimum length limit and fishing season:

Grayling, 40 cm. From 16. 5. to 30. 11.

Brown trout, 40 cm: From 1. 4. to 30. 9.



Gonška Brda, Slovenia
www.klet-brda.si

KLET  BRDA
 Family vineyards





www.zzrs.si

Photos: Jože Borišek, Markus Müller, Herlé Hamon, Rune Aaen-Vaksvang